





An introduction by
Captain J E K Ellis RN
Commanding Officer
HMS CAMPBELTOWN

Introduction



2

We are indeed fortunate to serve in the first commission of HMS CAMPBELTOWN for not only does this class include probably the most effective and capable units ever to join the Fleet, but also Cammell Laird Shipbuilders have provided us with a smart and well constructed ship.

It is now our responsibility to realize the potential of HMS CAMPBELTOWN. In this first commission we will establish her reputation and, through our own personal and professional endeavours, we will form the ship's character and operational performance which will remain with HMS CAMPBELTOWN throughout her service in the Royal Navy.

The creation of a good and lasting reputation is no easy task and it will require a major commitment from us all.

We must not forget that we have at least two priceless assets that will help us achieve our goals. On the one hand we have the support of our families whose understanding and encouragement will be an essential element of HMS CAMPBELTOWN's character.

And, on the other hand, we also have the reputation of our predecessors whose very gallant actions at Saint Nazaire on 27/28 March 1942 during Operation Chariot are commemorated by the decision to commission another HMS CAMPBELTOWN to join the Royal Navy. It is up to us therefore to make sure that through our efforts we maintain the reputation of HMS CAMPBELTOWN so that we can look back on this first commission with pride and affection.

John Fui



The present HMS CAMPBELTOWN

HMS CAMPBELTOWN was launched at Birkenhead on 7 October 1987 by Lady Kathleen FITCH, our Sponsor. The ship went to sea for the first time on 24 September 1988 on Contractor's Sea trials, returning to Cammell Laird's on 6 October for completion. After delivery to Devonport by a combined crew of Cammell Laird employees and "CAMPBELTOWNS" the ship was accepted into naval service on 24 February 1989. After a short period of trials HMS CAMPBELTOWN attended Preliminary Safety Training at Portland in April. HMS CAMPBELTOWN is presently carrying out a further series of weapons, radar and sonar trials before joining the operational fleet.

The launch on 7th October 1987



HMS CAMPBELTOWN

Commissioning Book

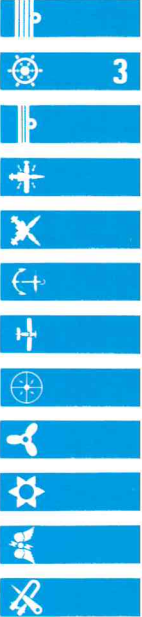
To mark the events of
Saturday 27th May 1989



VICTORIA FORTE SEQUITUR

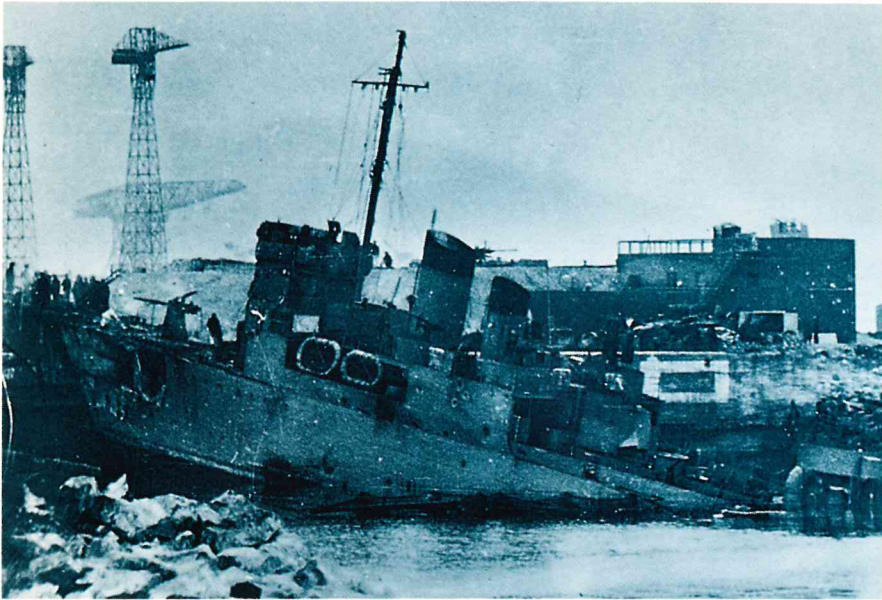
Contents

Introduction	2
The present HMS CAMPBELTOWN	3
History	4
Ship's Data	5
Weapons	6
Ship's Company	8
Helicopters	10
Communications & Computer Systems	11
Propulsion & Power	12
WE, X & S&S Departments	13
Ops & ME Departments	14
Affiliations	15





A brief history of
the first HMS CAMPBELTOWN
and the raid on the Normandie
lock at St Nazaire in 1942



HMS CAMPBELTOWN rammed on the caisson

The present HMS CAMPBELTOWN is only the second ship to bear the name. The first was launched in 1919 as USS BUCHANAN, a flush deck cruiser. BUCHANAN was only in commission for a total of 11 years between the wars, but at the outbreak of the Second World War was refitted to operate in the eastern Atlantic.

BUCHANAN was handed over to the Royal Navy, and, like 8 other "flush deckers" was renamed after a town common to America and Britain.

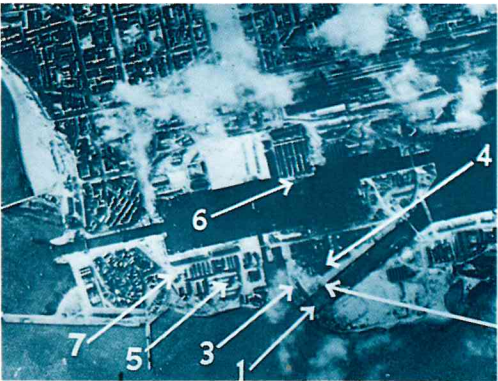
After a refit at Devonport the new HMS CAMPBELTOWN joined the Battle of the Atlantic.

In 1941 she was transferred to the Royal Netherlands Navy and reverted to her old name and for a time had a Polish crew, but later that year returned to the Royal Navy.



In 1942 CAMPBELTOWN took part in Operation Chariot, the heroic raid on St Nazaire. 4 tons of TNT were fitted into the bow and the superstructure was altered to make her resemble a German torpedo boat. Extra armour was fitted and much of her armament removed. On 26 March HM Ships CAMPBELTOWN, ATHERSTONE and TYNEDALE, ML 306, MGB 314, MTB 74 and 16 Motor Launches sailed from Plymouth, carrying 159 officers and men of 2 Commando and a Special Services Brigade Demolition Party of 90.

At 0134 on 28 March, after weathering very heavy fire



Aerial view of the attack

on the approach to the Normandie dock CAMPBELTOWN successfully rammed the caisson, and at 1135 blew up, destroying the dock.

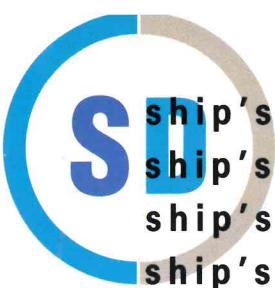
Despite the very heavy loss of life the raid was entirely successful. Lieutenant Commander S H BEATTIE,

CAMPBELTOWN's Commanding Officer, was awarded the Victoria Cross "in recognition not only of his own valour but also that of the officers and men of the very gallant Ship's Company."

Lt Commander S H Beattie VC RN



HMS CAMPBELTOWN



Batch 3 Type 22 Frigate
'Broadsword' Class

Displacement tons)	Standard 4200 Full Load 4900
Dimensions (metres)	148.1 x 14.8 x 6.4
Main Engines	COGAG arrangement of 2 Rolls Royce Spey SM1A gas turbines; 37540 shp. 2 Rolls Royce Tyne RM1C gas turbines; 9700 shp.
Speed (knots)	30 (18 on Tynes)
Range (miles)	4500 at 18 knots (on Tynes)
Complement	273 (accommodation for 296)
Keel Laid	4 December 1985
Launched	7 October 1987

Aircraft	Two Lynx Mk 2 helicopters with Sea Skua Air-to-Surface Missiles and Anti-Submarine torpedoes. (can also operate Sea King or EH 101).
Missiles	Surface-to-Surface Missiles – Harpoon (two 4-barrelled launchers). Surface-to-Air Missiles – Sea Wolf (two 6-barrelled launchers).
Guns	One 4.5 inch Mk 8 Naval Gun One 30 mm Goalkeeper (Anti-Missile Rapid Fire Gun) Four 30 mm (twin)
A/S Weapons	Six (2 triple) Ship-borne Torpedo Weapons System Torpedo Tubes Helicopter-carried Anti-Submarine Torpedoes.

HMS CAMPBELTOWN during Contractor's Sea Trials





Seawolf GWS 25 Mod 3

Seawolf GWS 25 Mod 3 missile system is a rapid response, all-weather point defence weapon which can be used against missiles and aircraft. It comprises Marconi Type 967M and 968 surveillance and target indication radars to provide target detection and two Marconi 805 SW (RN Type 911(1)) tracking radars for control and guidance of the Seawolf missile. The missile is manufactured by British Aerospace and the two six-barrelled launchers by Vickers.

During the Falklands Conflict Seawolf was credited with destroying five aircraft. The system is fully automatic and represents the state of the art in naval missile technology, and has demonstrated its ability to engage and destroy Exocet sea-skimming missiles and 4.5 inch naval shells. The system continues to be developed and GWS 26, a vertically launched variant is fitted in the Type 23 Frigate.

Harpoon

With a range in excess of 70 miles Harpoon 1-C gives HMS CAMPBELTOWN a considerable anti-ship capability. Stored in canisters from which it is launched, Harpoon requires no onboard maintenance. The ship's command and control system passes targetting data to and launches the missile which then carries out the attack without further input from the ship. Extremely reliable, this sophisticated missile can overcome countermeasures to locate and destroy hostile targets.

Produced by the McDonnell Douglas Corporation, Harpoon is in service with 20 different countries and in its various configurations can be launched from submarines, ships and aircraft.

Surface to Air Missile: Harpoon



4.5 inch Mk 8 Gun

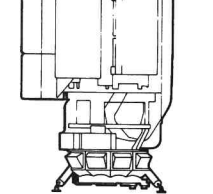
HMS CAMPBELTOWN's Mk 8 Gun (built by Vickers Shipbuilding and Engineering Ltd) is part of the GSA 8 system. Information on the target can be taken from the 967 radar or the British Aerospace General Purpose Electro-Optical Directors which contain a TV camera



4.5 inch Mk 8 Gun

with zoom lens, a thermal imaging camera and a laser range finder.

The 4.5 inch Mark 8 gun is in service with 5 navies and 11 classes of ship and has been fitted in Batch 3 Type 22 Frigates for Naval Gunfire Support (shore bombardment in support of troops) but is also has a proven anti-air and anti-ship capability. Fully automatic loading and aiming ensures a rapid response from the system. The high explosive ammunition used against all targets can be set to explode either on impact or close to the target.



Goalkeeper in action



Goalkeeper Anti-Missile Rapid Fire Gun

In Goalkeeper, Hollandse Signaalapparaten BV have produced an entirely self-contained point defence system. Goalkeeper comprises a General Electric GAU-8/A Gatling Gun controlled by Signaal search and tracking radars. The fire control computer can track and evaluate as many as 30 attackers and automatically engage them in order of greatest threat. Complete destruction of the attacking missile is achieved by a combination of the GUA-8/A's accuracy and high rate of fire combined with the penetrating power of the tungsten alloy "bullets".

Goalkeeper is HMS CAMPBELTOWN's third layer of defence against aircraft and missiles. The combination of GSA 8, Seawolf and Goalkeeper give Batch 3 Type 22s one of the best layered defence capabilities in the world.

ships company

Rank/Rate	Inits	Surname	Rank/Rate	Inits	Surname
SA	DE	GAMBLE	S(OPS)	PJ	CURRAN
ALCK(C)	RM	GARFOOT	S(OPS)	W	DADD
CK(C)	DR	GARFORTH	S(M)	G	DARWOOD
STD	FA	GUIVER	AB(M)	MD	FLACK
ALSTD	SP	HALCROW	AB(M)	LB	HENDRICKSON
ASTD	WA	HARDWICK	AB(R)	MJ	HENNAH
ACK	KJ	HEMSLEY	AB(R)	D	HOLLAND
LCK(CA)	CB	JOY	AB(R)	SA	HOLT
WTR	MW	MADELIN	AB(R)	S	HORLICK
ALCK	NR	MOORE	AB(R)	RA	HUDSON
LSA	K	MOUNSEY	AB(M)	SA	JENNINGS
SA	JM	MURPHY	AB(M)	A	JOHN
ASA	J	SCOTT	JS2(M)	J	JONES
ALWTR	SJ	SKELLETT	S(OPS)	MR	JONES
WEM(R)2	JJ	ALEXANDER	ALS(M)	SR	KNAPPER
WEM(R)1	KR	BADMAN	S(OPS)	M	LEONARD
ALWEM(R)	A	BARNES	S(OPS)	RJ	LLOYD
WEM(O)2	I	BIRCHMORE	S(R)	RP	LOMAS
WEM(R)1	K	BRANTON	S(OPS)	SM	LUDDEN
WEM(R)2	AJ	BRASSINGTON	AAB(S)	SJ	MARSHALL
WEM(O)1	BA	BROOKE	S(OPS)	JJ	MCCONKEY
ALWEM(R)	CH	BROOKS	AB(R)	JS	MURPHY
LWEM(R)	DA	CARTER	AB(EW)	AC	PATTON
JWEM(R)1	PJ	COCK	RO1(G)	RL	PITTS
WEM(R)1	CT	DAINTY	AB(S)	DR	POPE
WEM(O)1	SM	DAY	RO1(T)	EM	PORTER
WEM(O)1	JAE	DIDCOCK	RO2(T)	IM	POTTS
LWEM(O)	MS	GARRAD	LPT	SW	RILEY
ALWEM(O)	IH	GOLDER	AB(S)	NJ	ROBERTSHAW
WEM(O)2	GJ	LANGSTON	AB(R)	GT	ROBSON
WEM(O)1	DA	MACDONALD	RO1(G)	JA	SEARLE
ALWEM(R)	S	MCCANN	AB(EW)	RL	SHEPPARD
WEM(O)1	SJ	MCCOLM	RO1(T)	TJ	STORMONT
ALWEM(R)	PJ	MCDONALD	AB(R)	TJL	THOMAS
ALWEM(R)	MJ	MINETT	LRO(G)	P	THOMAS
ALWEM(O)	G	MULLOY	RO1(T)	D	THOMPSON
ALWEM(O)	JC	REAY	AB(R)	D	WALKER
ALWEM(R)	I	REDMAN	AB(S)	JL	WALSH
JWEM(R)1	SE	RUMSON	AB(EW)	PB	WISE
WEM(O)2	AW	SHAW	JMEM2	IM	BOX
ALWEM(O)	DA	WELCH			
ALWEM(O)	N	WORSLEY			
AB(S)	GJ	ADAMSON			
AB(R)	SC	ANDERSON			
RO1(G)	NA	BAIRD			
JS2(M)	DK	BARR			
S(OPS)	IE	BARROW			
AB(M)	PJ	BARSLEY			
LS(R)	SDP	BEENY			
S(OPS)	SC	BOWMAN			
ALS(S)	D	BOYES			
AB(R)	JE	BROOKS			
AB(S)	GP	CHUEN			
AB(M)	P	COOPER			
MEM(L)2	RBL	BLACKBURN			

Rank/Rate	Inits	Surname
MEM(L)1	MJ	BOYCE
MEM(M)2	SW	BROOKS
MEM(M)1	A	BUDWORTH
MEM(M)1	RI	BUTTRISS- PALMER
MEM(M)1	RJ	COPE
LMEM(M)	TJ	COX
MEM(M)1	DR	DANIELS
MEM(M)1	GL	DENN
MEM(L)1	WS	DRUMMOND
MEM2	J	DUFFY
ALMEM(M)	AR	FREEMAN
MEM(M)1	DM	GRAY
ALMEM(L)	MP	GUERRIERE

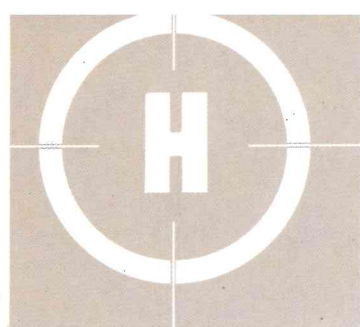


Rank/Rate	Inits	Surname
MEM(M)1	ID	HAZELL
ALMEA	PJ	HONEYBUN
MEM(M)1	AC	JEFFERSON
MEM(M)1	BR	KELF
LMEM(M)	NP	LAMBLEY
MEM2	JA	MACDONALD
MEM(M)1	A	MCCARTHY
MEM(L)2	RG	MCGOWN
LMEM(M)	MA	NEEDHAM
ALMEM(M)	C	PEARN
MEM(L)1	S	ROBERTS
MEM(L)1	KR	UPCHURCH
MEM(M)1	AS	WELLS
MEM(M)1	RD	WILLIAMS
ALMEA	P	YOUNG
ALS(R)	P	ATKIN
ALS(R)	JA	BELL
ALS(R)	TJG	BOWERS
AB(M)	GT	CLARK
LS(SEA)	CH	COONEY
ALS(EW)	PE	FREEMAN
RO1(T)	DA	FURSE
LRO(G)	E	GRIFFITHS
LS(EW)	PM	IRVING
ALS(S)	MI	KENDALL
ALS(S)	DI	LITTLE
AB(M)	AK	MAIDEN
ALS(R)	ASW	MAIN
ALRO(G)	DJ	PATON
LREG	C	REVELL
ALS(SEA)	AJ	ROPER
AB(M)	DJ	THOMPSON
AB(R)	N	TOWNSEND

Rank/Rate	Inits	Surname	Rank/Rate	Inits	Surname
CCWEA	WN	PUGH	CPOMEA	PE	EDWARDS
CMEM(M)	D	MCATHEY	CPWEA	N	TOWNSEND
CPOMEA	RN	WHELAN	CPOMEA	RN	WHELAN
ACWEM(R)	M	BACON	ACPOWEA	DA	CHILTON
CPOMEA	SJ	HAWKINS	CPWEA	RC	BATESON
CPWEA	CG	HARWOOD	CPWEA	CG	HARWOOD
CWEM(O)	PR	HILLIARD	ACPOSA	IJ	BUTCHER
CPO(SEA)	R	STUART	AMAA	K	SHAPIRO
APOWEA	KJ	BELL	APOWEA	N	BODMAN
APOWEA	SC	HURLEY	POWEM(O)	CB	MEARS
POWEM(O)	CB	MEARS	APOWEA	JM	MENNIM
POWEA	F	REIDY	POWEA	F	REIDY
APOMEA	CR	LEWIS	APOMEA	MWS	PEARSON
APOMEA	MC	SHAW	POWEM(L)	DJ	CROSSFIELD
POWEM(L)	DJ	CROSSFIELD	POWEM(L)	HH	HALFHIDE
POWEM(L)	HH	HALFHIDE	POWEM(L)	S	HINDLE
POWEM(L)	S	HINDLE	POWEM(M)	G	KEARNEY
POWEM(M)	G	KEARNEY	APOMEA	J	MILLAR
APOMEA	J	MILLAR	APOMEA	MJ	SIZELAND
APOMEA	MJ	SIZELAND	POWEM(O)	RN	BARCLAY
POWEM(O)	RN	BARCLAY	APOWEM		READER
APOWEM		READER	CPOMEA	P	BIGGS
CPOMEA	P	BIGGS	CPOMEA	GA	BOND
CPOMEA	GA	BOND	CPOMEA	FA	DAVIES
CPOMEA	FA	DAVIES	CPOMEA	PA	LEE
POCK	GC	DYER	POCK	VS	FREWER
POSTD	VS	FREWER	POMA	TCE	LANGLEY
POCA	SJ	MOULTON	POCA	SJ	MOULTON
POCK	N	MYLES	POCK	N	MYLES
POWTR	RE	TERRY	POWTR	RE	TERRY
CPO(OPS)	D	ETHERINGTON	CPO(OPS)	D	ETHERINGTON
ACPO(OPS)		FORD	ACPO(OPS)		FORD
CPO(OPS)	JO	KILROY	CPO(OPS)	JO	KILROY
CPWEA	NE	BASSETT	CPWEA	NE	BASSETT
CPWEA	R	BAYES	CPWEA	R	BAYES
CPWEA	JG	KNOTT	CPWEA	JG	KNOTT
CPWEA	N	ROWLAND	CPWEA	N	ROWLAND
LSA	LJ	ARMSTRONG	LSA	LJ	ARMSTRONG
SA	KM	BARRY	SA	KM	BARRY
STD	P	BRAY	STD	P	BRAY
CK	JR	CAINE	CK	JR	CAINE
CK(C)	A	CLAYTON	CK(C)	A	CLAYTON
JACK1	S	CONNETT	JACK1	S	CONNETT
WTR	S	DOCHERTY	WTR	S	DOCHERTY
JACK1	P	FISHER	JACK1	P	FISHER
LSTD	PM	FOREMAN	LSTD	PM	FOREMAN
CK(C)	JN	FOX	CK(C)	JN	FOX
ACK	JW	FOY	ACK	JW	FOY

ship's company

Rank	Inits	Surname	Rank	Inits	Surname
CAPT	JEK	ELLIS	WO(MEA)	CW	BURRILL
LTCDR	RJ	BISHOP	WOWEA	RJ	TAPSON
CDR	DN	BRITTEN	PO(R)	CT	DENT
CDR	AH	CLARK	LS(R)	EJ	KEARNEY
LTCDR	SA	CHANDLER	PO(S)	A	KELLY
LT	TM	YOUNG	LS(R)	A	LAWSON
LT	JH	REES	PO(M)	BM	MEDHURST
LT	PT	MORGAN	ALS(S)	SJ	OGGIANO
LT	JM	SLAWSON	PO(R)	PT	STANLEY
LT	S	LAYLAND	PO(EW)	PA	STRIKE
LT	MJ	CARSON	RS	AJ	BOYES
LT	AG	MCDONOUGH	CY	TA	WEEKS
S/LT	SWL	WILLIAMS	CCMEA(L)	DW	DUDDING
S/LT	TC	HOWARTH			



helicopters

Lynx HAS Mk2 Helicopter with Sea Skua



To assist in her primary role as an anti-submarine frigate HMS CAMPBELTOWN can carry either two Lynx or one Sea King helicopter (all made by Westland Helicopters Ltd). When a submarine is detected by the ship's sonar the Lynx is used to drop depth charges or a

10



EH 101 Helicopter

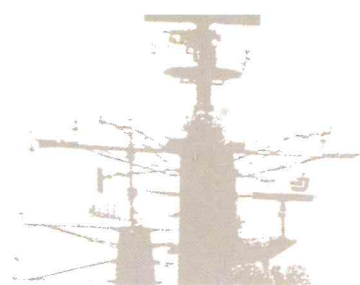
Sting Ray lightweight torpedo over the submarine. The Sea King has its own sonobuoys and variable depth sonar and can track and attack submarines without assistance from the ship.

ship's torpedo weapon system

The Lynx's very potent anti-surface capability is provided by four Sea Skua missiles. With its own radar the helicopter can find its own target and engage it with Sea Skua or can relay targetting information to the ship for a Harpoon attack.

HMS CAMPBELTOWN will also be able to operate the EH101 Merlin which is currently under development. This most capable ASW helicopter will further enhance the ship's considerable ASW ability.

The Sting Ray Lightweight torpedo made by Marconi Underwater Systems Ltd is also used in the Ship's Torpedo Weapon System. An autonomous guided weapon, once launched it can search for, home onto and sink both conventional and nuclear submarines.



CACS

CACS (Computer Assisted Command System) has been designed by Ferranti Computer Systems to gather, process and present data collected from the ship's sensors, assist in the evaluation and management of this data and finally control the weapons systems. Using Ferranti FM 1600E computers the system can operate with real contacts or can generate artificial data for training.

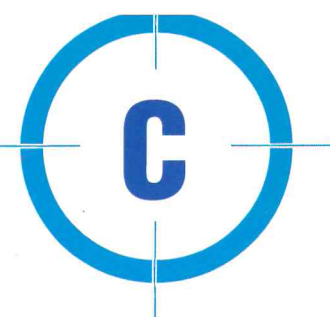
2016/2031

The 2031Z Towed Array sonar produced by Dowty Maritime Systems provides long range passive detection and classification of submarines, ensuring that the ship can avoid coming within range of the submarine's weapons whilst attacking the submarine using a helicopter or Maritime Patrol Aircraft to deliver the weapon.

Medium range active and passive detection is obtained through Sonar 2016 (Plessey Naval Systems Ltd).

Mounted in the prominent bow dome, this sonar uses electronic beam steering rather than physical stabilisation with hydraulic rams. This provides a much quieter environment for the transducers and therefore improves performance, 2016 also provides warning of torpedo attack enabling the ship to counter-attack the submarine, activate decoys and take avoiding manoeuvres.

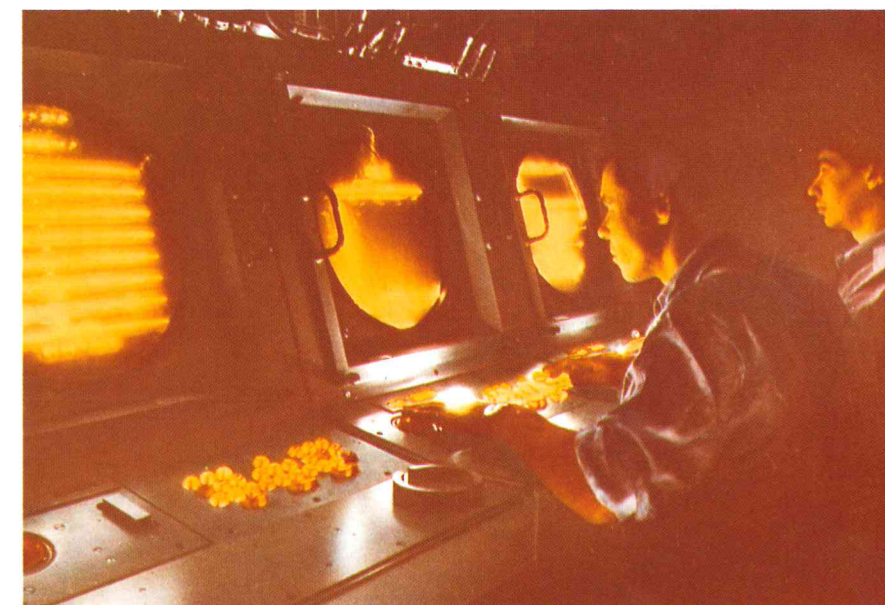
communication, computer & underwater systems



CAMPBELTOWN is the first ship in the Royal Navy fitted with the DIMPS signal distribution system. Signals received from or sent to ships, aircraft or ashore are received through the Marconi ICS 3 and then distributed to addressees by DIMPS.

11

A look at the Radar in action





propulsion & power generation

HMS CAMPBELTOWN at speed



Rolls Royce Gas Turbines

Two Spey and two Tyne gas turbines give CAMPBELTOWN a very flexible propulsion system. Either pair of turbines can be operated alone to give fuel economy, or both pairs together for high speed. With a total power rating of 36 MW a top speed of 29 kts is available.

Ventilation

The air conditioning and ventilation system provides a suitable environment for the stable operation of the electronic equipment and a comfortable atmosphere to work in, regardless of the climate, enabling the ship to perform effectively in any part of the world. Built by APV Hall the system has facilities for clearing smoke from inside the ship and maintains a clean, filtered supply of fresh air.

Power Generation

The four Paxman Valenta Diesels fitted in CAMPBELTOWN provide sufficient electricity to power a small town. Two engines can supply all the ship's needs but at



higher states of readiness all will be run to ensure against loss of power after damage or breakdown.



Executive Department

Led by the First Lieutenant the small but vital Executive Department has several tasks. The Regulating staff are responsible for discipline, the coordination of the other departments and the movement of personnel to and from the ship. They also provide the ship's postal service.

The Petty Officer Medical Assistant provides health care while the Physical Training Instructor keeps us fit by organising the ship's sport.

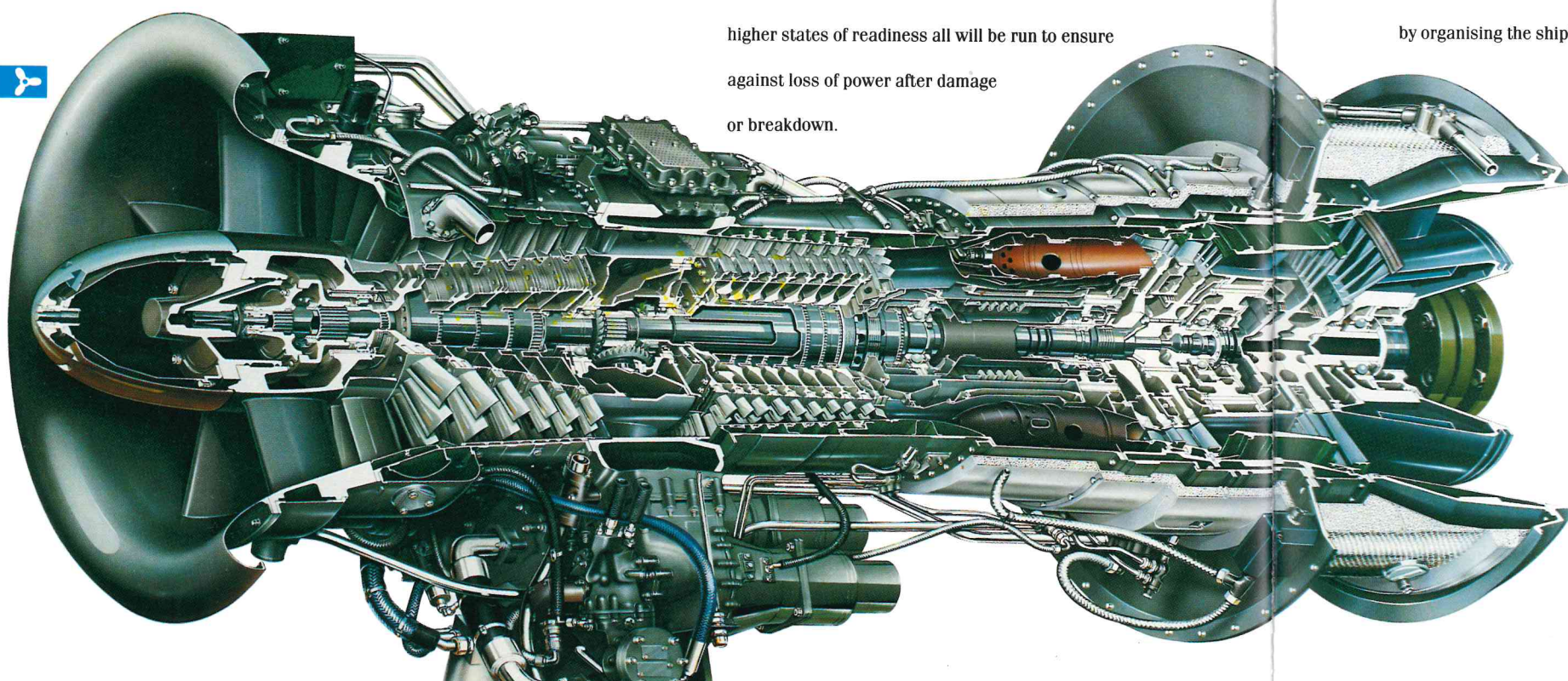
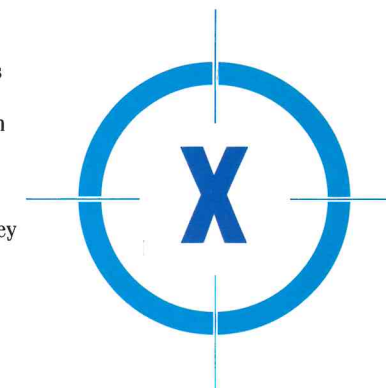
Weapons Engineering Department

The WE Department is responsible for maintaining the operational effectiveness of the ship's weapons, sensors, computer systems and communications. This equipment includes electronic technologies from thermionic valves through to microprocessors, lasers and fibre optics, both in the individual systems and in the interconnecting data highways and computers. Along with the Ops Department the WEs also have a key role in the operation of technically complex weapon systems.

Supply & Secretariat Department



The "S & S" provide logistic and administrative support to the ship. The Cooks and Caterers produce 800 meals a day, and the Stores Accountants control a stock of 25,000 different items essential to the maintenance and repair of the ship. The Writers are responsible for all pay and personnel records and coordinate the Ship's correspondence. Wardroom services are provided by the stewards. There is a small NAAFI shop with two staff that provides a basic range of goods. The Supply Department is assisted in its task by the Royal Navy's latest ADP system, OASIS 4, which contains a comprehensive range of accounting, management and word-processing systems.





Operations Department

Ops Department in action



Missile: The directing of the ship's guns and missiles.

Communications: Transmission, reception and processing of signal traffic using radio, satellite and visual systems.

Electronic Warfare: Interception and analysis of radar transmissions and the operation of decoy systems.

Flight: The operation and maintenance of the ship's helicopters.

Seamanship: Specialists in replenishment at sea, towing, anchoring and life saving equipment.

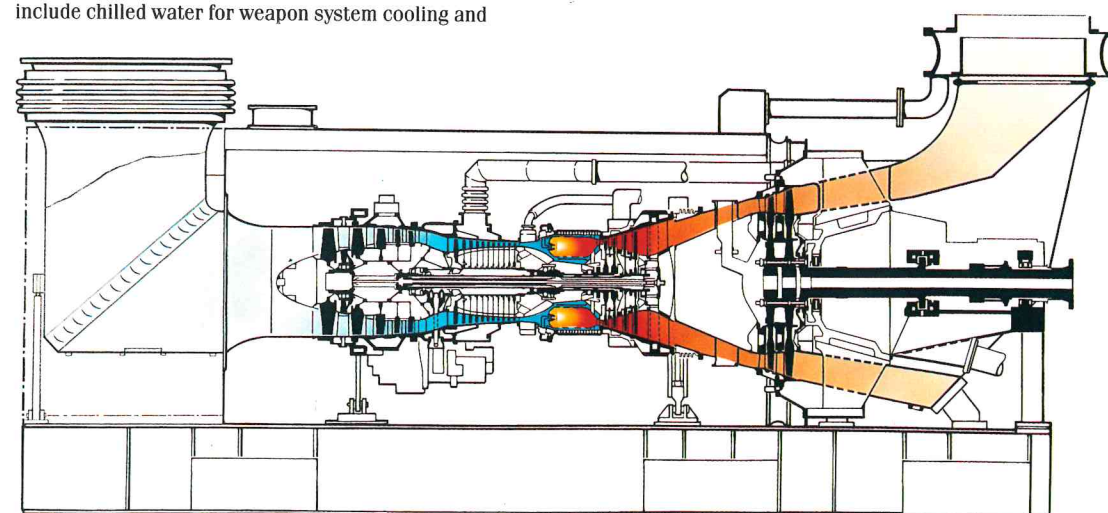
The Operations Department fights and drives the ship.

There are seven sub-specialisations:

Sonar: Detecting and tracking submarines and controlling ship-launched torpedoes.



air conditioning, ventilation, hydraulic power, evaporators to make drinking water and the sewage treatment system. The department is also responsible for the maintenance of the hull and structure of the ship.

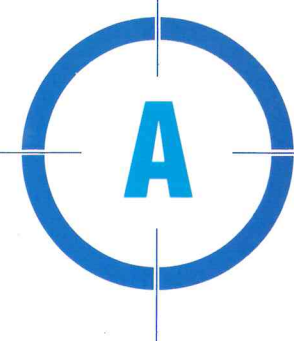


Designed and produced

By Graphic Design

School of Art and Design

Liverpool Polytechnic



Affiliations

Sea Cadets

TS BLAKE is Bridgewater's Sea Cadet Corps unit and is celebrating its 25th anniversary this year.

Previously affiliated to the Cruiser HMS BLAKE, the unit's 45 cadets have now re-established their links with the Fleet through their affiliation with HMS CAMPBELTOWN.

Combined Cadet Force

Through its Combined Cadet Force, Bradfield College has been connected to the Royal Navy for many years. HMS EURYALUS has been Bradfield's affiliated ship but she pays off from Fleet Service this year and CAMPBELTOWN is looking forward to taking on this role.

J (Sidi Rezegh) Battery Royal Horse Artillery

J Battery originated as the Madras Horse Artillery

Troop in 1805 and served in many campaigns in India.

In 1861 the Troop amalgamated with the Royal Artillery and in 1889 assumed its present title. The Battery was mechanised in 1935 and during the operation to relieve

Tobruk in 1941 earned its honour title. Presently equipped with 105mm Abbot guns, J Battery will receive the FH70 when it returns from Germany this year.

24 Squadron RAF

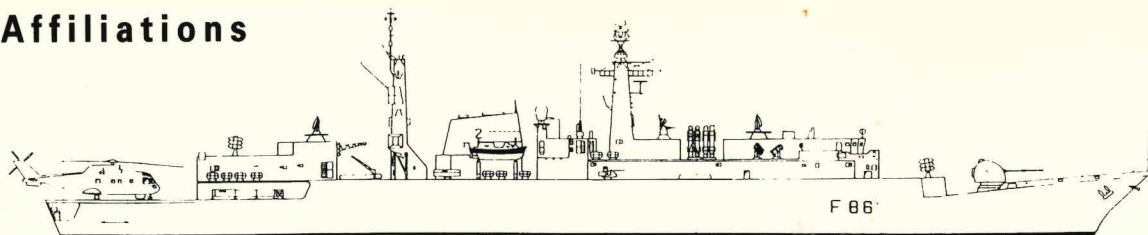
24 Squadron Royal Air Force is HMS CAMPBELTOWN's affiliated RAF unit. Based at RAF Lyneham, the Squadron flies C130 Hercules aircraft and in addition to their troop and freight carrying responsibilities, have played a leading role in the development of the RAF's Air to Air refuelling ability. The Squadron has also taken part in many humanitarian operations, the most recent being Operation Bushel, part of the Ethiopian famine relief effort.

24 Squadron Hercules



A

Affiliations



The first HMS CAMPBELTOWN was named after both the Scottish town and Campbeltown, Pennsylvania.

The American half of the partnership has been the custodian of the old ship's bell, rescued from the ship before the St Nazaire raid. When the present ship was nearing completion, Campbeltown USA was asked if the town was willing to return the bell to the Royal Navy, and after a vote carried out on the same ballot day as the Presidential Election, the community kindly agreed to place the bell in our care until the present CAMPBELTOWN pays off. The bell is the only surviving trophy from our illustrious predecessor and to have the privilege of its custody is a great honour.

Campbeltown is a charming small town at the southern end of the Kintyre peninsula in Western Scotland.

HMS CAMPBELTOWN anchored off her namesake during Contractor's Sea Trials in October 1988 and several representatives of the local community were received onboard. We look forward to our first visit to our affiliated town under the white ensign so that we can cement the Ship's association both with the town and the region of Argyll and Bute. Not surprisingly, the town's Sea Cadet Corps unit is named TS CAMPBELTOWN and a special link has already been well established with this very dynamic group.

