



# Spring Newsletter

Small-Town Service. Strong Community.

MARCH — SEPTEMBER 2026

## Spring Leaf Cleanup

### Administrative Office:

27 West Market St.  
Palmyra, PA 17078

Phone: 717-838-5556

Fax: 717-838-4122

Hrs: M-F, 7:30am-4:00pm

### Spring-Summer Office Closures:

Good Friday:  
Friday, April 3, 2026

Memorial Day:  
Monday, May 25, 2026

Independence Day:  
Saturday, July 4, 2026

Labor Day: Monday,  
September 7, 2026

### UPCOMING BOARD OF SUPERVISORS MEETINGS

March 10, 2026

April 14, 2026

May 12, 2026

June 9, 2026

July 14, 2026

August 11, 2026

September 8, 2026

[Full Meeting Schedule](#)

South Londonderry Township will conduct curbside leaf collection 2 weeks this spring: The week of April 6 and the week of April 13. Collection will begin in Zone 1 and end in Zone 4 both weeks.

Residents should have leaves ready by 7:00 a.m. on the first day of their scheduled week. Crews will make one pass through each zone, and the Township will not return for missed piles.

### How to Prepare Your Leaves:

Place leaves in long, narrow piles (3–4 feet wide) along the curb.

Please keep leaves away from storm drains to help prevent localized flooding.

For a full map of collection zones and dates, please scan the QR code or visit the [Township website](#).

Keep piles at least 15 feet from parked cars, intersections, and basketball nets so equipment can safely reach them.

Do not bag leaves or cover them with tarps.

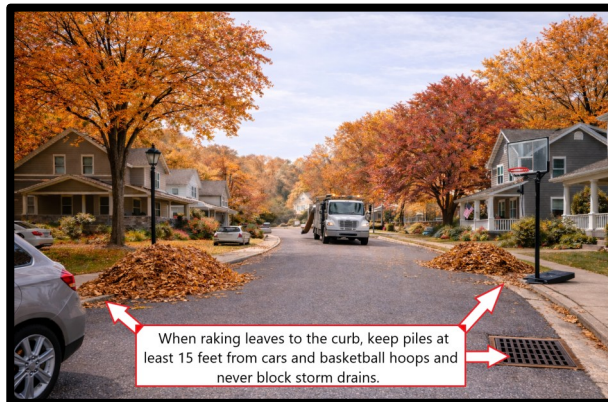
Remove sticks, branches, pinecones, or other debris — they damage the collection equipment.

Important Reminders:

If your street is not dedicated to the Township, curbside collection will not be available.

Bad weather or holidays may delay pickup, but crews will resume as soon as possible.

Leaves will not be collected after April 17.



## 2026 Road Maintenance Projects

South Londonderry Township has several important roadway improvements planned for 2026. Crews will be completing a profile mill and overlay of Long Road between Gingrich Road and Bachmanville Road, fixing an adhesion problem and extending the life of the road. We will also be doing a mill and overlay on

Cutoff Road.

Additional work will include milling around storm inlets to address depressions and settling issues, crack sealing on various township roads, fresh line striping for improved safety, ongoing pothole patching, and storm-water pipe relining to enhance drainage and protect our infra-

structure.

These projects are part of the Township's ongoing commitment to maintaining safe, reliable, and well-kept roadways for our residents and visitors. Short-term inconveniences may occur during construction, but the long-term benefits will be well worth it.

# From the Chief's Desk



Neighbors,  
As warmer months approach, we see more activity on our roads, in our neighborhoods, and at our parks. That's a good thing — but it also means we all need to be mindful of safety.

**Traffic Safety**  
Our officers continue to monitor speeding in residential areas. Please remember: neighborhood roads are meant to be shared. Drive slowly, watch for pedestrians and bicyclists, and always stop for school buses. A few extra seconds on your trip can prevent a lifetime of regret.

**Community Awareness**  
Warmer weather also tends to bring an increase in door-to-door scams and phone calls targeting seniors. If you receive a suspicious call or encounter someone at your door who seems “off,” don't hesitate to call us. We would rather check out something small than have a resident taken advantage of.

**Celebrations and Fireworks**  
As we head toward summer holidays, a reminder that Pennsylvania law limits the use of consumer fireworks, especially near homes and businesses. Fireworks may be fun, but they can also be disruptive

and dangerous. Please be courteous to your neighbors and mindful of the rules.

Our department is proud to serve South Londonderry Township. If you see us out in the community, give us a wave or stop to say hello — we're here not just to enforce laws, but to be part of the neighborhood fabric.

Stay safe and enjoy the season,

William Reigle  
Chief of Police  
South Londonderry Township

## ORDINANCES OF INTEREST

- [Burning Ordinance](#)
- [Soliciting Ordinance](#)
- [Curfew Ordinance](#)
- [Dog Ordinance](#)
- [Nuisance Ordinance](#)
- [Property Maintenance Ordinance](#)

# Scam Alert! Stay Safe in 2026

Scammers are always coming up with new tricks, but most rely on urgency or fear. Here are a few to watch for:

**Fake Calls & Texts:** Scammers can make it look like a local number, delivery service, or even the government. They'll say you owe money, missed jury duty, or need to click a link. Don't.

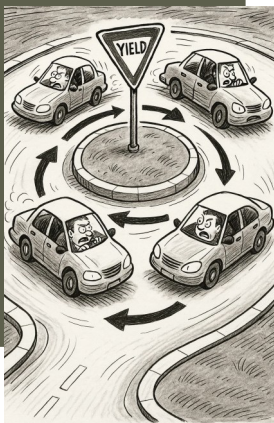
**Utility Shutoff Threats:** No utility will demand gift cards or instant payment by phone.

**AI Voice Scams:** Criminals can mimic a loved one's voice to ask for money fast. Always call the person back directly before acting.

**Remember:** If someone pressures you to act quickly, pay in unusual ways, or share personal info, it's almost certainly a

scam. When in doubt, hang up and call us at the Township Police Department.

*“Public safety is not just the job of the police—it's a partnership with every neighbor, every street, every community.”*



# On the Road: Safety Updates

Staying safe on our roads takes teamwork between drivers, pedestrians, and transit riders. Here are three reminders for 2026:

**Traffic Circles** – Approach slowly and yield to cars already in the circle. Stay in your lane, signal when exiting, and always watch for pedestrians. Roundabouts improve traffic flow and

reduce crashes when used correctly.

**School Bus Stops** – Pennsylvania law requires drivers to stop at least 10 feet away and remain stopped until the lights stop flashing and the stop arm is withdrawn. Never pass a stopped bus in either direction unless you're on a divided highway with a physical median. Give extra space at bus

stops, avoid distractions, and watch for children crossing the road or running to catch the bus—those few seconds of patience can prevent a lifetime of regret.

**Distracted Driving** – Pennsylvania's new “Paul Miller's Law” (effective June 5, 2025) bans handheld device use while driving. Warnings are issued until June 2026, after which fines begin at \$50 plus costs.

# Officer Spotlight

## Meet K9 Officer Freyja

K9 Freyja serves South Londonderry Township with exceptional skill and loyalty. Trained in narcotics detection, tracking, and officer protection, she assists in locating missing persons, detecting illegal substances, and supporting patrol operations. Beyond her duties, Freyja is a community ambassador—attending events, meeting residents, and showing the important bond between police officers and their canine partners. She’s more than a working dog; she’s part of our township family.



# Traffic Calming Policy

South Londonderry Township has adopted a Traffic Calming Policy to help keep local roads safe and livable. Measures may include speed humps, raised crosswalks, or other design features that encourage drivers to slow down. Residents can request traffic calming by petitioning the Township, with strong neighborhood support required. Each request is evaluated through traffic studies, accident history, and community feedback. In some cases, temporary pilot projects are used before permanent measures are installed. This community-focused approach ensures that solutions are data-driven, effective, and designed to protect the safety of pedestrians, cyclists, and motorists alike. See our website for more info!

# Police Services

**Citizens Police Academy (planning)** – A hands-on program designed to give residents a behind-the-scenes look at police work, from patrol operations to investigations.

**Stop the Bleed Class** – Free training that teaches lifesaving techniques for controlling severe bleeding until medical help arrives. Visit the [PD Website](#) for dates and times.

**House Checks** – Officers will check your home while you’re away, adding peace of mind during vacations or extended absences. Call our office for more info.

**Autism Information Form** – Families can share important details about loved ones with autism so officers are better prepared during emergency calls. Forms can be found at the [PSP website](#).

**County Special Needs Form** – A broader tool to help first responders understand medical or behavioral needs during crisis situations. Link [HERE](#).

**WLCREMA News** – You can find updates from the West Lebanon County Regional Emergency Management Agency on preparedness, weather alerts, and community safety efforts.

### Quick Links:

- [Nixle/Everbridge](#)
- [Facebook](#)
- [SLT Website](#)

# From the Manager’s Desk

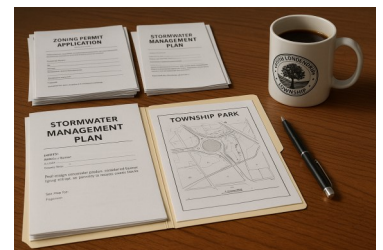
As we welcome the warmer months, I want to thank you for staying engaged with township life. This year brings important projects—road maintenance, stormwater improvements, and continued investment in our parks. These efforts ensure our community remains safe, resilient, and enjoyable for all.

Our staff is here to serve you, whether it’s answering questions about permits, keeping roads clear, or supporting community events. I encourage you to stay connected through meetings, our website, and this newsletter.

Together, we’re building a township that balances growth with the small-town spirit we all value. Thank you

for your continued support and partnership.

Sincerely,  
John Eberly  
Township Manager



# Stormwater Management



## Keep Grass Out of the Street

Blowing grass clippings into the street isn't just messy—it's harmful. Rain washes clippings into storm drains, sending excess nutrients to local streams and fueling algae growth. Clogged drains may lead to local flooding and erosion. This practice is prohibited under our MS4 stormwater program. Please mow responsibly: keep clippings on your lawn, not the roadway.

## Scoop the Poop & Save Our Streams

Pet waste left on the ground doesn't just disappear—it washes into storm drains and streams, adding bacteria that pollutes our water. Bag it, trash it, and keep our creeks clean for fishing, swimming, and wildlife.

## Don't Feed the Algae

Grass clippings and fertilizer in the street don't stay put. Rain washes them into storm drains, fueling algae blooms that harm fish and turn water green. Keep clippings on the lawn and use fertilizer sparingly. A little care goes a long way to protect our waterways.

## DIY Projects & Erosion Control

Starting a home project? Contact the Township before any earth-moving begins—permits or controls may be required. Keep dirt, gravel, and wash water out of the street, since rain carries loose soil into storm drains and streams. Use silt socks, tarps, or mulch to keep soil in place and protect our waterways.

*“Don't treat the street like a trashcan—every drain is a stream in disguise.”*

## Know Your Flood Zone: Protecting Property & Community

Flooding is the most common natural disaster in Pennsylvania. South Londonderry Township participates in FEMA's National Flood Insurance Program (NFIP), which means property owners can purchase flood insurance—but also must follow Township rules for safe building in flood-prone areas.

**Flood Zones:** FEMA maps (FIRMs) identify Special Flood Hazard Areas (SFHAs), or

“100-year floodplains,” with a 1% annual chance of flooding .

**Building Rules:** Any construction or development in a floodplain requires a Township permit and must meet strict elevation, anchoring, and flood-proofing standards .

**Why It Matters:** Proper construction reduces future flood damage, protects water quality, and keeps insurance rates manageable.

## Leaf & Yard Waste Re-

**minder:** Yard waste should never be dumped in streams or floodways—it clogs drainage and increases flood risk.

For FEMA flood maps and insurance info, visit [www.fema.gov/flood-maps](http://www.fema.gov/flood-maps).

For local permits and guidance, contact the Township's Floodplain Administrator and visit the [Township website](#).

## Recycle Right: From Bottles to Leaves

Free recycling containers for new residents can be picked up at the Township Building.



In addition to traditional items—like glass bottles, plastics (#1 & #2), cardboard, and cans—residents are reminded that leaf waste is recyclable too. Bag leaves in paper bags for your trash hauler or place them curbside for

scheduled collection so they can be composted instead of clogging landfills.

To learn what goes where, visit the Greater Lebanon Refuse Authority (GLRA) website at [gogra.org](http://gogra.org). Recycling right ensures your efforts count! South Londonderry Township conducts curbside leaf collection 2 weeks in the Spring and throughout the Fall. [The](#)

[Township does not have a green waste facility](#). Make sure you're following us on Facebook and checking the [Township website](#) for news and updates on this important service.

# Spring Update from the Highway Department

Spring is always a busy season for the Highway Department, and this year is no different. As temperatures rise, crews will be out repairing potholes and cracks that developed over the winter. Crack sealing is a key part of extending the life of our roads—it prevents water from seeping beneath the pavement, which helps reduce future potholes and costly repairs. Please use extra caution when driving near work zones and equipment.

We'll also begin township-wide street sweeping in April. That date

will be announced soon. Residents can help by avoiding street parking during scheduled sweeping days so crews can cover every stretch of road.

Playground inspections and maintenance are also on the spring agenda. Equipment will be checked for safety, mulch will be replenished, and any needed repairs will be made so children can enjoy a safe place to play.

As always, please keep grass clippings and debris out of the roadway and storm drains, and trim trees and

shrubs along the right-of-way and sidewalks. With your cooperation, we can keep our roads, parks, and neighborhoods safe and well-maintained for everyone.



## Protecting Our Sewer System: What You Need to Know

South Londonderry Township's sanitary sewer system is designed to carry wastewater—not stormwater. Discharges from sump pumps, roof drains, swimming pools, or surface runoff into the sewer lines are prohibited. When stormwater enters the system, it can overload pipes, cause backups into homes, and lead to costly violations with the Department of

Environmental Protection.

Property owners may be inspected to ensure compliance. If violations are found, corrections must be made promptly. Failure to comply can result in surcharges of up to \$1,000 per month and daily penalties.

Please help us keep the system working properly: direct sump

pumps and roof drains outside—not into the sanitary sewer.

## Palmyra Library

### Library Titles & Tees Spring Fundraiser (March 2–28):

Pre-order a \$40 bundle at the Library and receive a custom T-shirt, a sponsored book of your choice, a reading log, and more. Extra shirts and sponsorships are available. Pick-up begins the week of April 20. Proceeds support Library programs and services.

Visit us Monday – Wednesday, 10am – 7pm; Thursday & Friday, 10am – 5pm; Saturday, 9am – 4pm (9am – 1pm from Memorial Day through Labor Day).

### 2026 Summer Reading Program:

Unearth a Story (Begins June 8) Reading programs for all ages with prizes and incentives. The Summer Kickoff Family Program, Science Heroes: Digging It, will be held June 15 at 11:00am at Palmyra Grace Church. Visit the Library's website this spring for full details.

### Annual Book Sale (July 11–16):

Join us at Palmyra 1st UMC to shop for great reads and support the Library.

Links:

Facebook: [PalmyraLibrary](#)

Instagram: [palmyrapubliclibrary](#)



# Airport Rd. / S. Forge Rd Roundabout

South Londonderry Township has been awarded \$1.2 million through Pennsylvania's Multimodal Transportation Fund for the construction of a roundabout at Airport Road and SR 117 (South Forge Road). The project is designed to improve safety, reduce congestion, and improve traffic flow at this key intersection.

Additional funding will be provided through PennDOT's Transportation Improvement Program (TIP), which includes federal transportation funds. While this funding is essential to the project, it requires additional reviews and approvals, resulting in a longer project timeline.

As a result, the project is expected to take up to three years to complete, which is typical for projects involving federal funding. The Township will continue working closely with PennDOT and our engineers and will provide updates as the project progresses.

## Why a Roundabout?

Roundabouts are increasingly used across Pennsylvania and the country because they offer several proven benefits:

- **Improved safety:** Roundabouts significantly reduce severe crashes by eliminating head-on and high-speed right-angle collisions.
- **Better traffic flow:** Vehicles keep moving rather than stopping at red lights, reducing delays and congestion.
- **Lower long-term maintenance:** There are no traffic signals to maintain, repair, or replace.
- **Safer for all users:** Pedestrians and cyclists cross one direction of traffic at a time, and vehicles travel at slower, more predictable speeds.

## Zoning 101

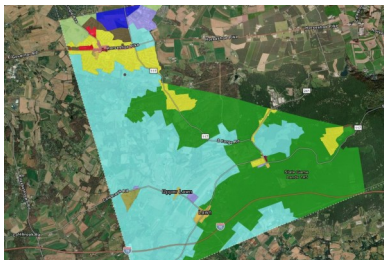
A zoning ordinance is a local law that implements your community's comprehensive plan. It divides the municipality into districts and sets the rules for what can be built (uses), how much (intensity like density/lot coverage), and what it must look like in form (height, setbacks, parking, landscaping). The purpose is to protect health, safety, and welfare; avoid land-use conflicts; guide orderly, predictable growth; coordinate development with infrastructure; and conserve natural and community resources.

### What triggers the requirement to obtain a zoning permit?

Pretty much any change that occurs outside of your home. Things like sheds, fences, pools, additions, pole buildings and patios all require a zoning permit. Permits can be found [here](#).

### What we're Looking for:

General property owner and location info is first. Then we're looking for a good description of what the project will be. Don't forget to make sure there are no easements on the property. Easements might limit where and what you can do. Also provide impervious cover calculations and list the setback distances from property lines. Finally, make sure you're not located in a floodplain. Floodplains



have different sets of rules that can drastically change your project and expenses.

### Useful Tools:

[Zoning Ordinance](#)

[Zoning Permit](#)

[Zoning Map Viewer](#)

[Floodplain Viewer](#)

[Lebanon County Property Viewer](#)

[Percentage Calculator](#)

[Unit Converter](#)

## South Londonderry Township

27 West Market Street  
Palmyra, PA 17078

### Board of Supervisors

Board of Supervisors:

Faith Bucks  
Jack Custer  
William Bova

**Small-Town Service. Strong Community.**



Just east of Hershey, South Londonderry Township ties together Campbelltown, Colebrook, Lawn, and a corner of Mt. Gretna—close-knit villages with a front-porch feel. Incorporated in 1894 after the old Londonderry Township was split, the area’s story reaches back to Campbelltown’s 1759 founding and the region’s iron-and-rail era—still echoed by the Colebrook Ironmaster’s House and the old rail bed at Mt. Gretna, where troops mustered for the Spanish–American War. Today the Lebanon Valley Rail Trail and the meanders of Conewago Creek thread past farms and pocket parks, keeping a small-town pace within minutes of big-town amenities.